

## Hitachi WJ200 / SJ700 Inverter for Solar Water Pump

From 0.75kW to 250kW

### Highlights

- Inverters with Solar Water Pump Control Option
- Available in Power Range from 0.75kW to 250kW
- Global Standard Approvals - CE, UL, c-UL, c-Tick
- Customized Programming Facility like Tank Water Level Control, Pump Dry Run Protection, Low Speed Slip Function etc.
- Total KWh/Power generated by Solar PV Panel Recording

### Features

- **Intelligent Pump Control**
  1. Automatic Start/Stop of Pump Motor based on Irradiation of Sun.
  2. Delay auto restart logic for drip irrigation systems.
  3. Dedicated reduce torque control mode for Pump operation.
- **Powerful PC Software**
  1. Easy commissioning and monitoring of Water flow of pump and Power generation / utilization of PV module.
- **In-Built Maximum Power Point Tracking (MPPT) Control System**
  1. Optimum Power utilization of PV Solar Panel
  2. Control and changes Output of Inverter as per Demand and availability of Power from Sunlight.
  3. Saves Money and Fuel during Daylight Hours

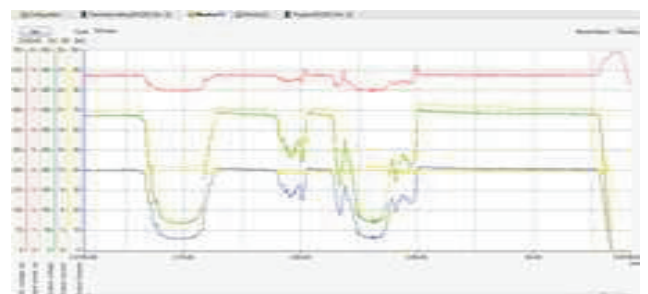
### • Compact Control Panel



### Solar Pump System

- Solar Pump System uses Photo-Voltaic Energy of the Sun to pump water for Agriculture/ Irrigation purposes and to feed water in Over-Head Tanks for Residential uses.
- Solar Pump uses Clean and Renewable energy.
- Operation principle is to convert the energy from Solar Radiation to Mechanical Energy of motor-shaft to pump water at specified flow-rate in the head.

### Powerful PC Software



## Hitachi Wj200 & SJ700 Solar Water Pump Inverter

### General Specifications

Maximum DC Input Voltage	400 V DC*1 900 V DC*2
MPPT Range	250 V DC to 400 V DC*1 460 V DC to 800 V DC*2
Maximum AC Output Voltage Range	200 V AC to 240 V AC*1 380 V AC to 480 V AC*2
Output Frequency	50 Hz/ 60 Hz
Efficiency	> 98%
IP Protection	IP 54
Operating Temperature	up to 50° C Ambient
Humidity	up to 95% RH (non-condensing)
EMC Class	EN- 61800-3
Protections	Over-Voltage, Over-Current, Over-Load, Over-Temperature, Dry-Pump Run, Phase Loss, Short-Circuit, Ground Fault etc.
In-Built Features and Functions	Intelligent Pump Control Functions, MPPT etc.
Communications Interface	Modbus RS-485 Interface

\*1- 200 V AC to 240 V AC Output Solar Water Pump Inverter

\*2- 380 V AC to 480 V AC Output Solar Water Pump Inverter

## Hitachi Wj200 Solar Water Pump Inverter

### 380 V to 480 V AC Output

Solar Pump Inverter Model no.	Output Current (A)	Applicable Pump Motor (kw)
<b>WJ200-055 HFC- SOLAR</b>	<b>17.5</b>	<b>7.5</b>